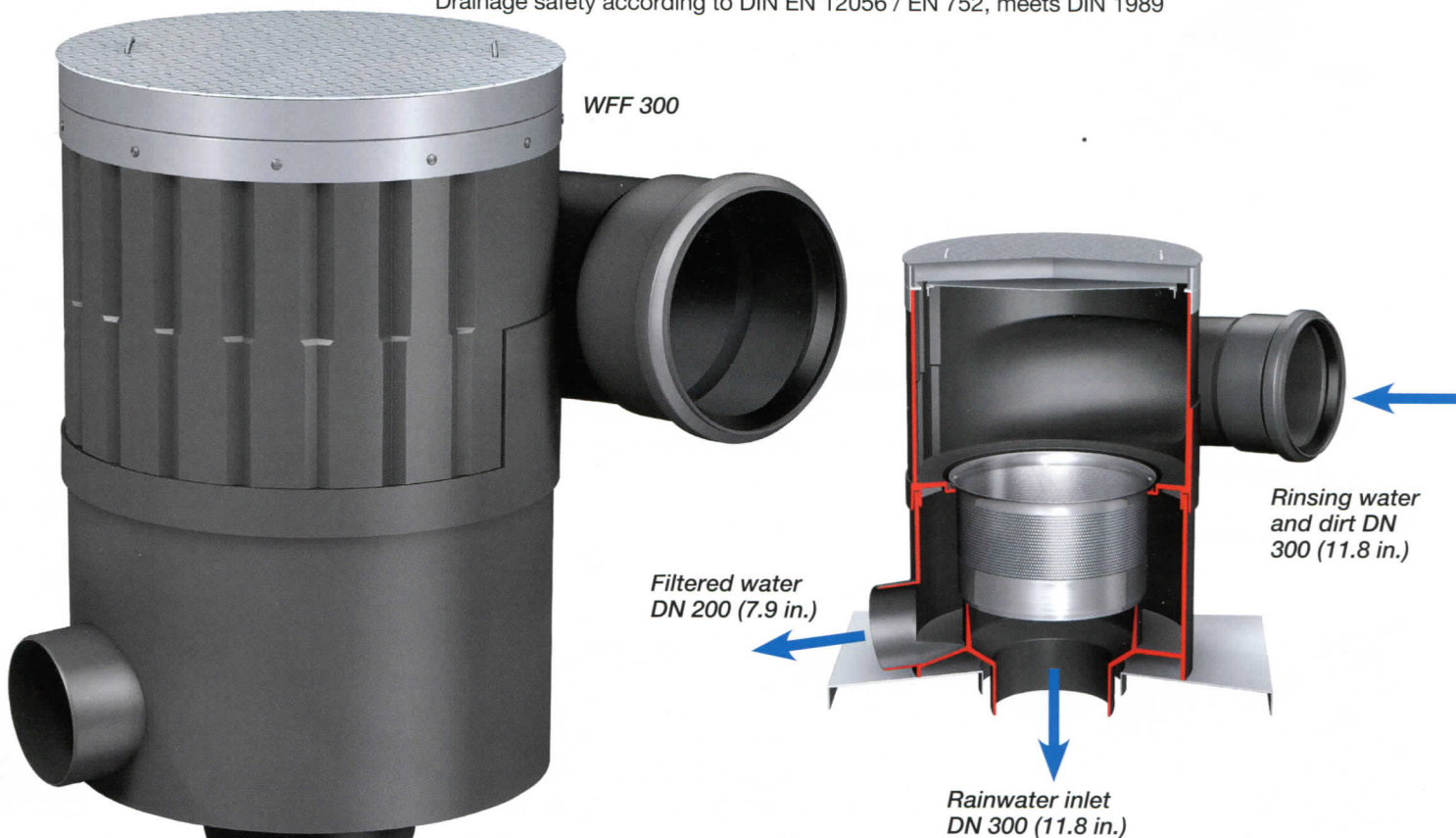


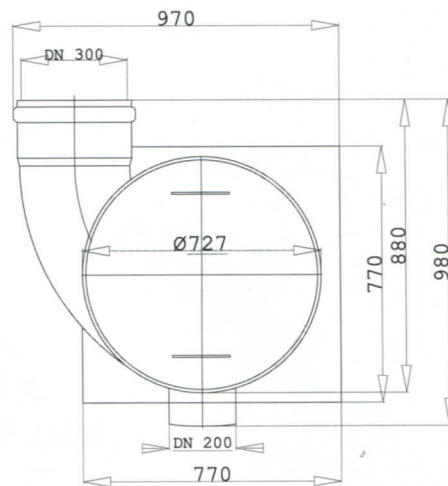
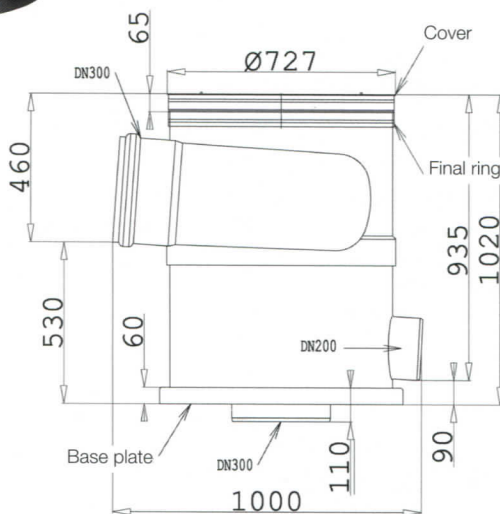
# Vortex fine filter WFF 300 (up to 3.000 m<sup>2</sup>/32,280 sq. ft)

Rainwater filter for installation below ground or inside buildings (for example industrial use). **Trafficability tested in accordance with German standard ATV guiding rules. According to the cover drivable up to 60 t.** Housing of polypropylene (PP). Filter insert of stainless-steel. Filter mesh size **0.38 mm (0.015 in.)**. The unit consists of housing, final ring with certified child safety device, aluminium or steel cover, filter insert, baseplate and 50 cm (1.6 ft.) lifting handle of stainless-steel.

Drainage safety according to DIN EN 12056 / EN 752, meets DIN 1989



**Drivable up to 60t**  
According to cover version



## Vortex fine filter WFF 300

## Item number

- WFF 300  
with steel cover, carries vehicles up to **12 t**  
(vehicles according to DIN 1072/SLW60) WF 3011
- WFF 300  
with steel cover, carries vehicles up to **60 t**  
(vehicles according to DIN 1072/SLW60) WF 3001
- WFF 300  
with aluminium cover, **passable on feet** according to DIN 1989-3 WF 3012



**SUPERPLASTIC**

Quai Timmermans 44 • B - 4000 Liège | Tel +32.4.252.98.70 | [www.superplastic.be](http://www.superplastic.be)